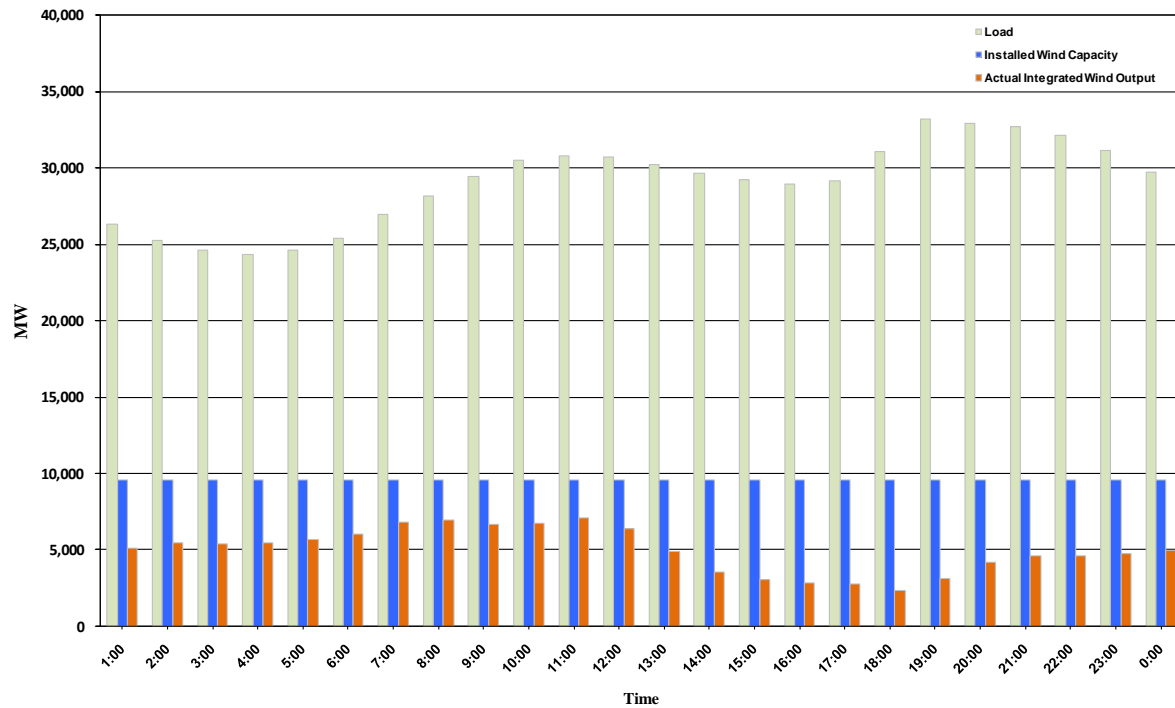




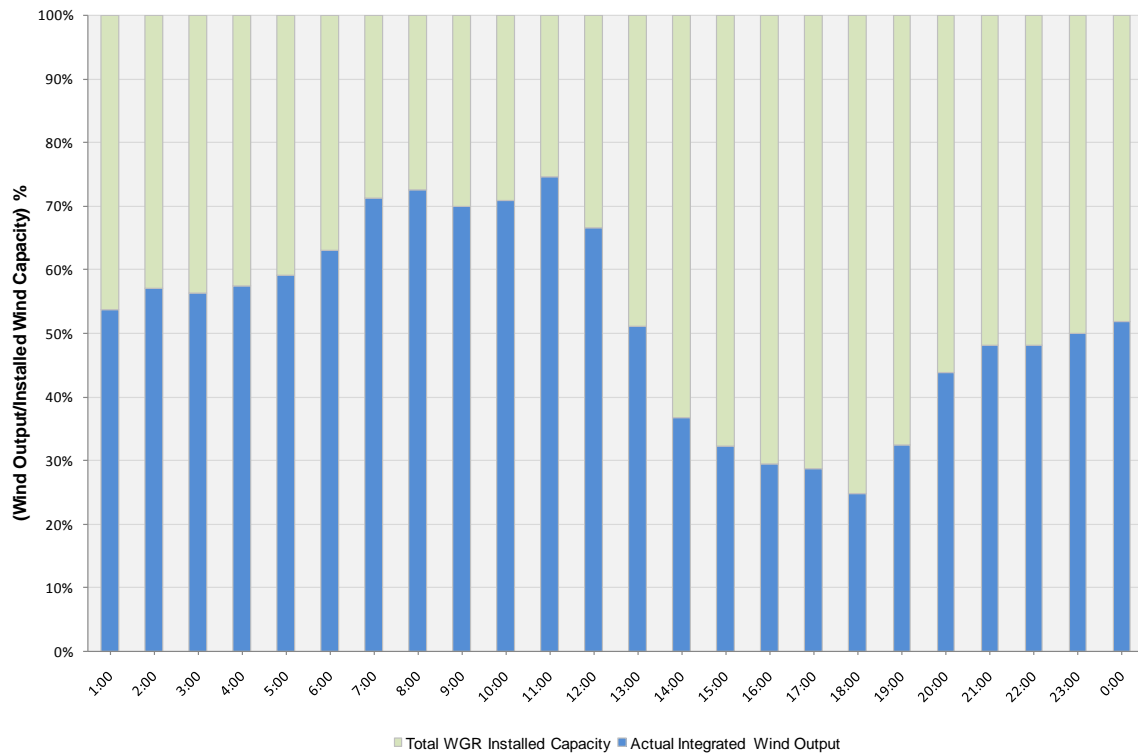
ERCOT Grid Operations Wind Integration Report: 12/11/10

Peak Load	33,199 MW
Load Peak Hour	19
Previous Wind Record 06/12/10	7,016 MW
New Wind Record	7,227 MW
Wind Peak Hour	07:16:32
Wind Integration %	25.80

Hourly Average Actual Load vs. Actual Wind Output
12-11-2010



Actual Wind Output as a Percentage of the Total Installed Wind Capacity
12-11-2010



Actual Wind Output as a Percentage of the ERCOT Load
12-11-2010

